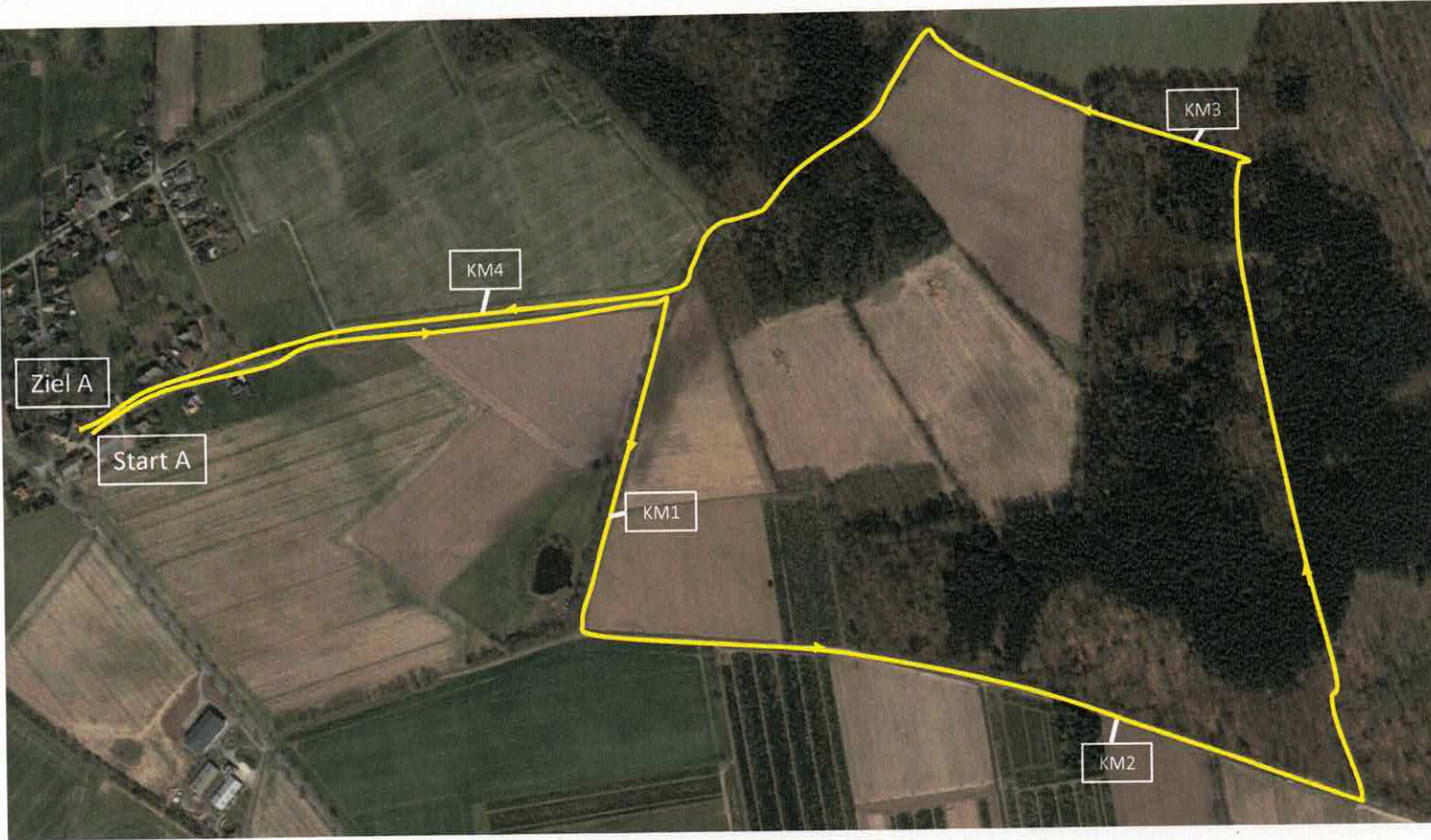
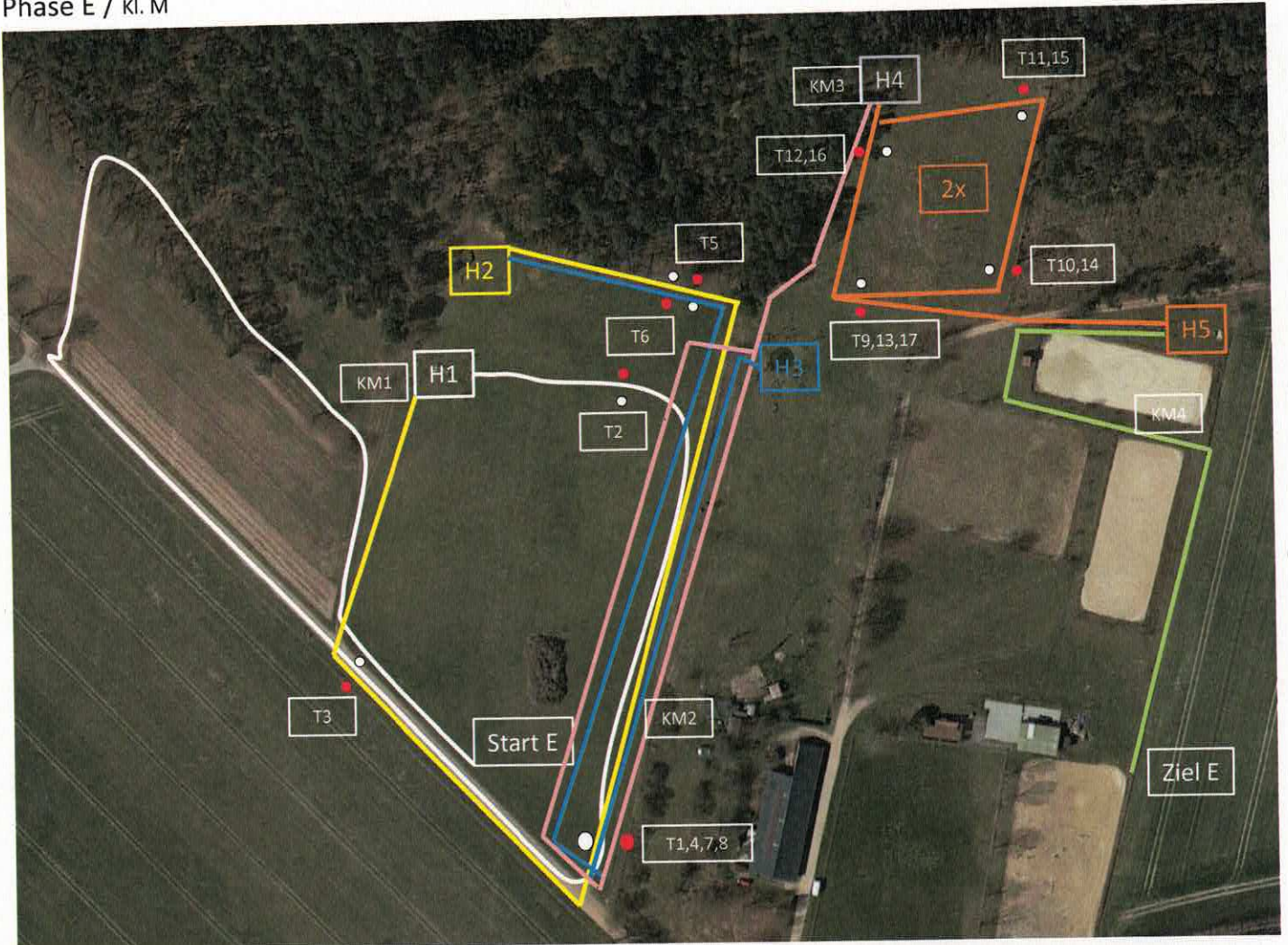


Phase A / kl. M



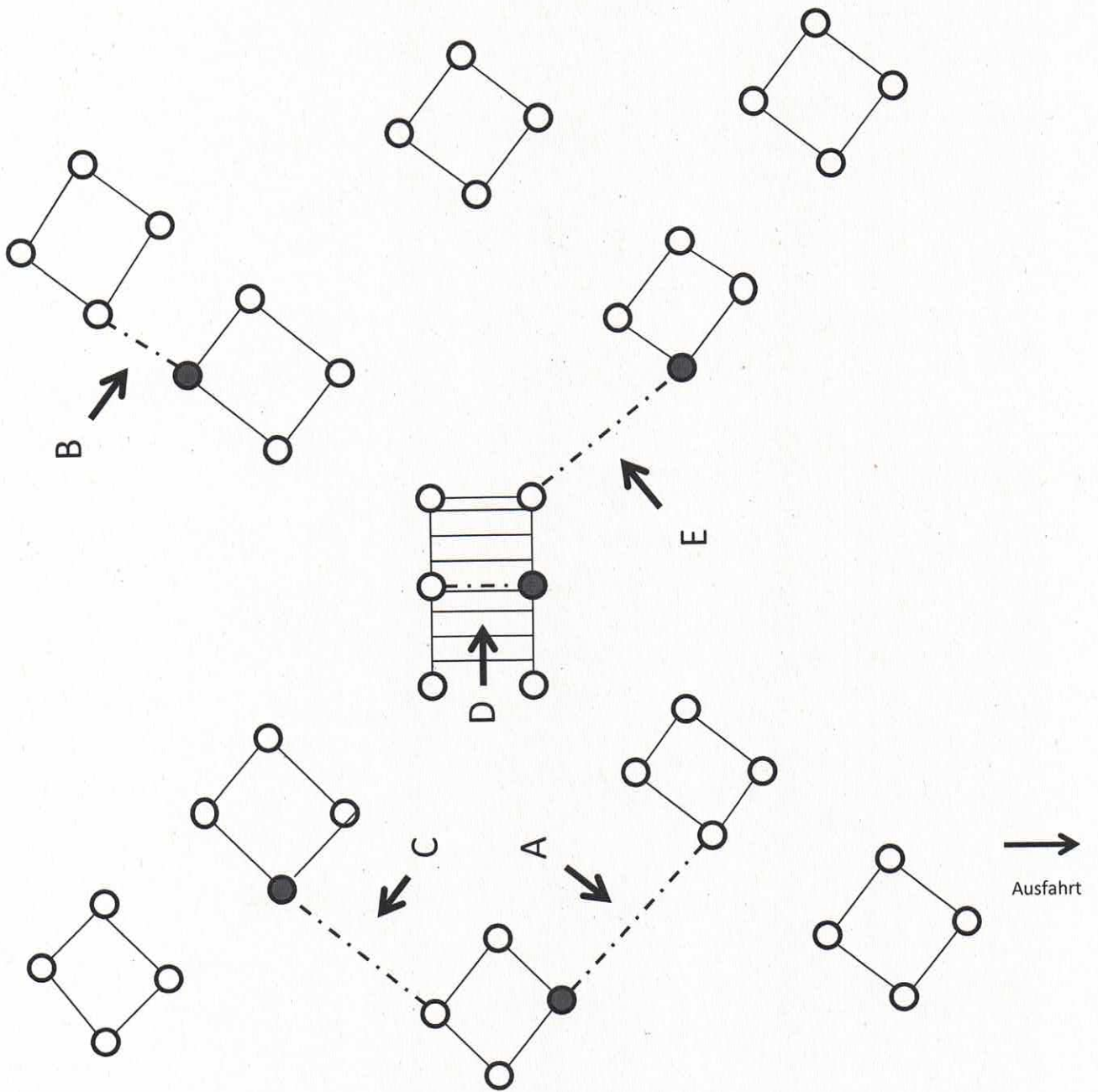
Phase E / kl. M



Start E-T1-T2-H1-KM1-T3-T4-T5-H2-T6-T7-KM2-H3-T8-H4-KM3-T9-T10-T11-T12-T13-T14-T15-T16-T17-H5-KM4-Ziel E

↓
Einfahrt

Hindernis 1

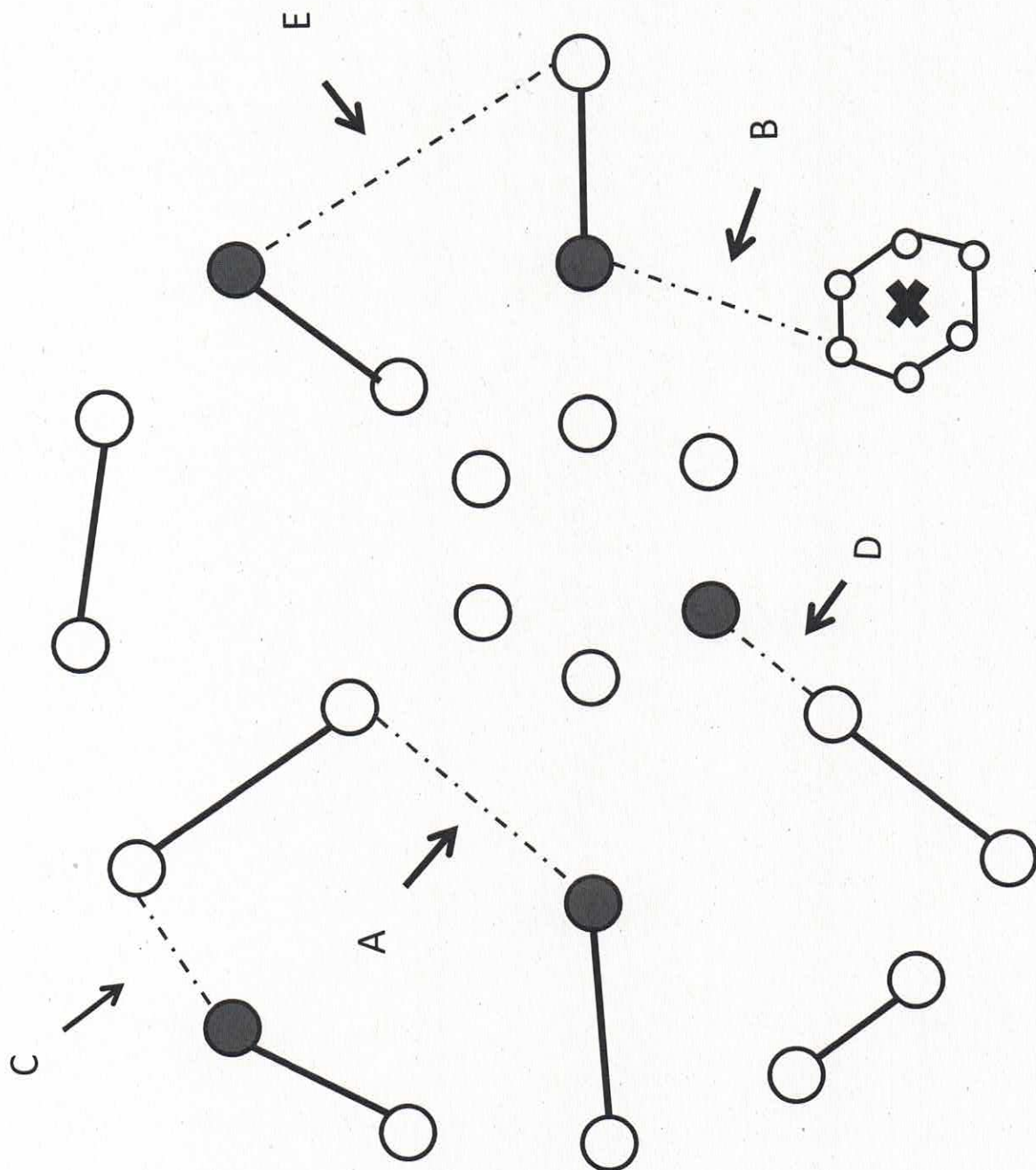


Hindernis 2

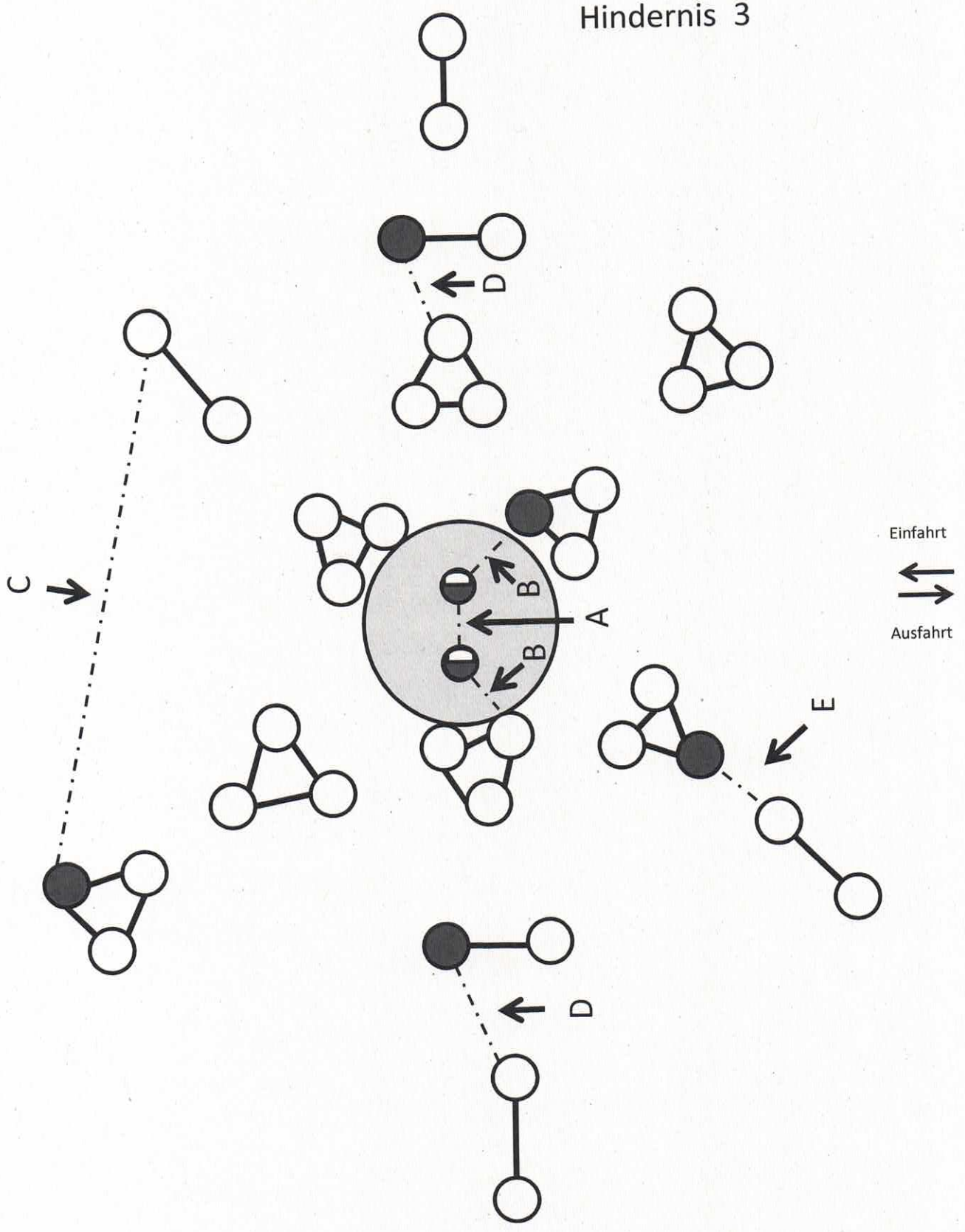
Einfahrt



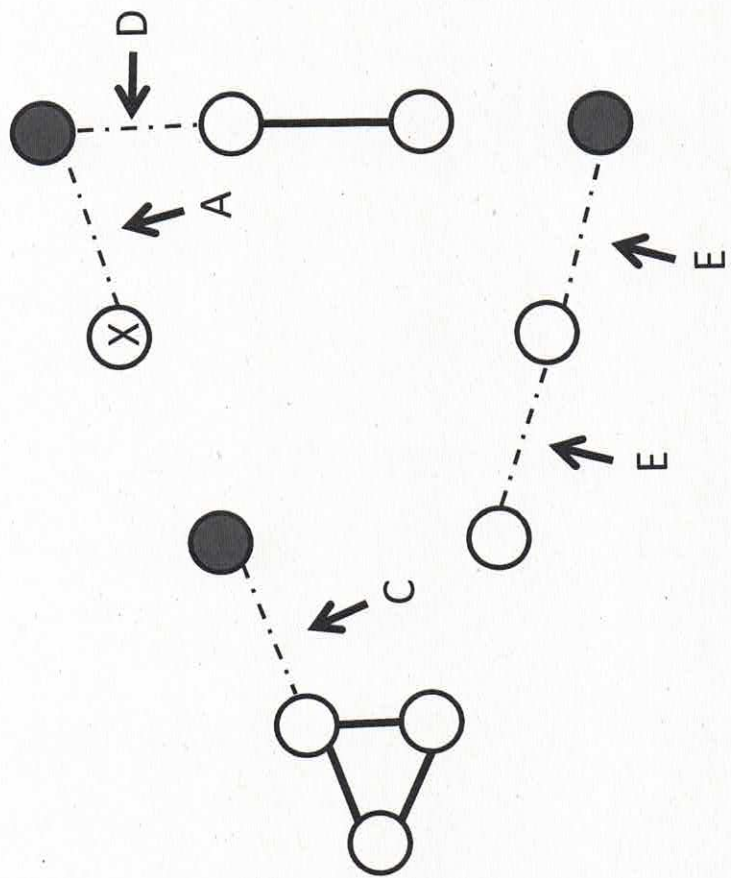
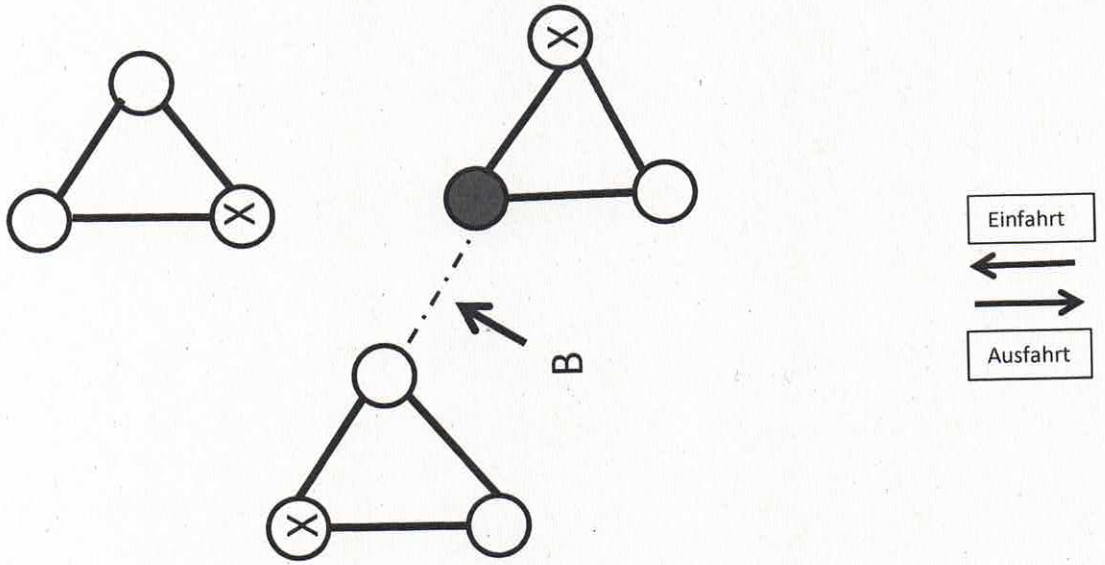
Ausfahrt



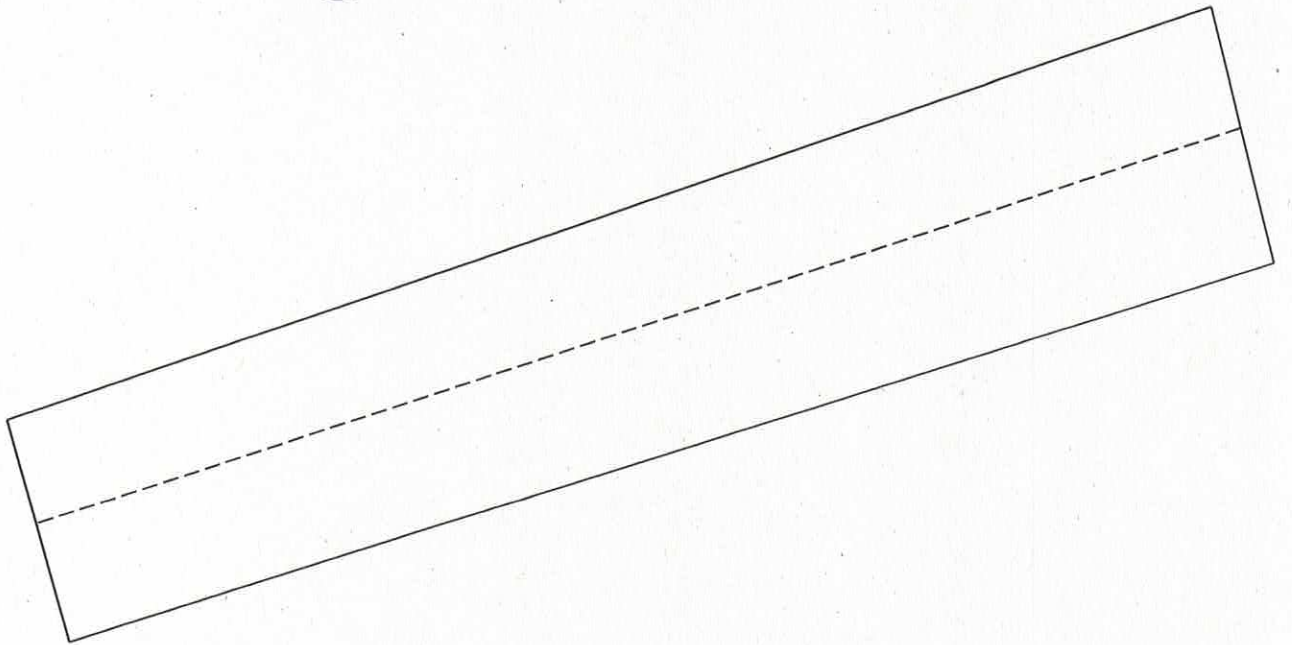
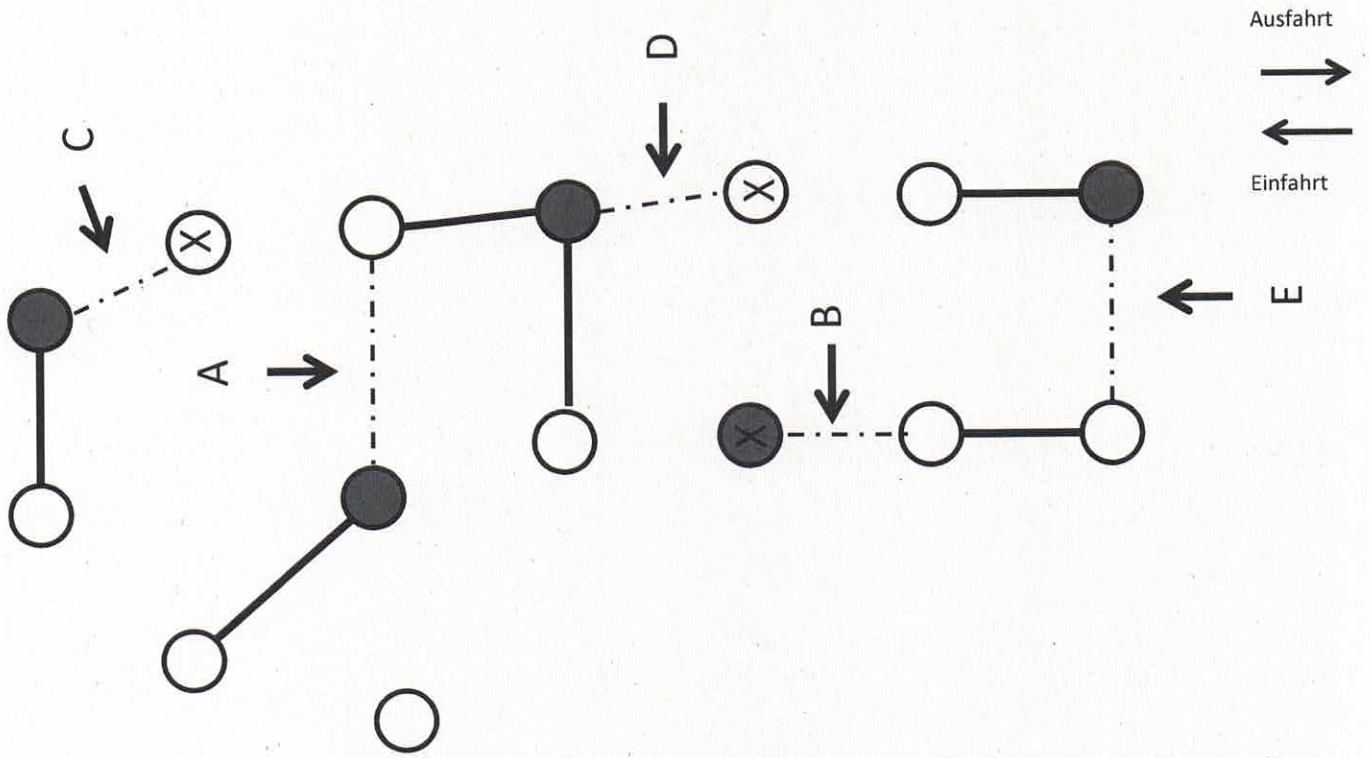
Hindernis 3



Hindernis 4



Hindernis 5



Geländeunterlagen

Fahrtturnier
des RFV Estetal e.V.

Klasse: **M**

Prüfungen: **2, 6, 10, 14, 18**

Teilstrecke	Anspannung	Länge in m	Tempo in km/h	EZ min:sec	BZ min:sec	HZ min:sec
Aufwärmstrecke (A+D)	Ponies	4600	12	23:00	21:00	27:36
Hindernisstrecke (E)	Ponies	4100	13	18:55	15:55	37:50
Aufwärmstrecke (A+D)	Pferde	4600	13	21:14	19:14	25:29
Hindernisstrecke (E)	Pferde	4100	14	17:34	14:34	35:08

Hindernisstrecke:

Start E-T1-T2-H1-KM1-T3-T4-T5-H2-T6-T7-KM2-H3-T8-H4-KM3-T9-T10-T11-T12-T13-T14-
T15-T16-T17-H5-KM4-Ziel E
